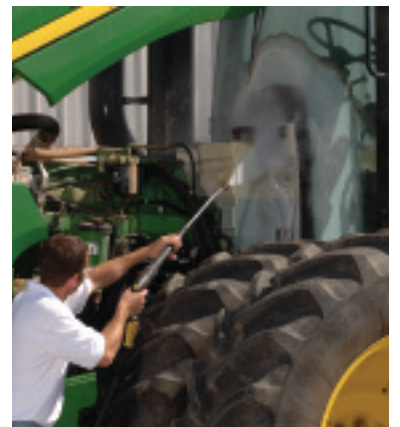
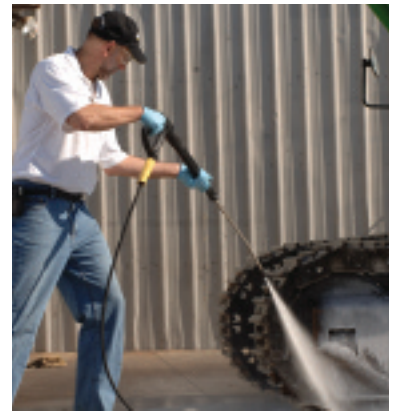


CLASSIC SERIES



# COMMERCIAL

## Compact-Class Electric-Powered Hot Water Pressure Washer for Commercial Applications



## Fully Featured Electric-Powered and Oil-Heated Hot Water Pressure Washer in a Compact Frame

Kärcher's HDS Compact-class machines offer big model features in a small package. With their extra compact design, these units are ideal for light commercial-duty cleaning applications or applications where periodic cleaning is necessary on a daily or weekly basis. These units feature Kärcher's 92%+ efficient burner system that uses up to 25% less fuel than similar performing models; complete trigger shut-off, high temperature shut-off, pivoting stainless steel spray wand and high-impact power nozzle. Models are ETL certified to both UL and CSA safety standards.

- **Super-Efficient Downdraft Burner**
- **Complete Shut-down at Trigger Gun**
- **Steam Capable**
- **Variable Flow, PSI, Temperature and Detergent**



**Dimensions:**  
37"L x 24"W x 29"H



### TYPICAL APPLICATIONS

- Maintenance
- Hospitality
- Contractors
- Agriculture
- Landscape
- Transportation
- Auto Dealerships
- Livestock
- Kärcher's 92% efficient **top-fired burner** delivers more heat from less fuel for the lowest operating costs in the industry

- Pressure-controlled **auto start/stop** ensures motor and pump shut down automatically when trigger gun is released
- **Detergent system** features integrated 2-gallon soap tank and **metering valve** to accurately and precisely vary the detergent volume
- Robust, three-piston **axial pump** features brass cylinder head and stainless steel valves; pump is protected by pressure switch, overflow valve and soft-dampening system
- 50' Kärcher **high-pressure steam hose** rated for 311°F connects to the gun with an integrated swivel connection
- Air-cooled **motor** is integrated with the pump in a single housing providing efficient energy transfer and smooth, quiet operation
- Built-in **motor protection** guards against damage caused by high amps and temperatures
- **High temperature protection** system shuts down the burner when unsafe exhaust temperatures are detected
- **Low-fuel indicator light** illuminates when fuel level is low
- **Low-water protection** prevents the burner from igniting when incoming water levels are low
- Easy-Press **trigger gun** features a shock absorbing soft-grip handle, on-gun swivel connection, and one-finger operation
- Durable 41" insulated stainless steel **wand** rotates 360° under pressure
- Large **control dial** and LED lights provide clear and easy control of important functions
- Many **safety features** such as ground fault circuit interrupter, pressure relief valve and certification to UL and CSA standards
- **Infinitely** variable operating pressure, water volume, temperature control, and detergent metering

Model	Order No.	GPM	PSI	HP	Electrical	Amps	Pump	Soap Application	RM 110 Anti-Scale System	Nozzle	High Temperature Shut-Off	Ship Wt
HDS 2.3/12 C Ed	1.170-606.0	1.2-2.3	450-1200	2.8	120V/1 Ph	20	Kärcher Axial	Low-Pressure		Change Over	•	270 lbs
HDS 3.0/20 C Ea	1.170-612.0	1.3-3.0	450-2000	5.7	230V/1 Ph	20	Kärcher Axial	High-Pressure	•	Power Nozzle	•	279 lbs

YOUR AUTHORIZED KÄRCHER DEALER:



Kärcher Commercial Pressure Washers  
[www.KarcherCommercial.com](http://www.KarcherCommercial.com)  
[info@karchercommercial.com](mailto:info@karchercommercial.com)  
 888-805-9852 • Fax 800-248-8409